



**KIA OVAL**  
EVENTS &  
ENTERTAINMENT

THE **BRINGING YOUR OWN**  
**CATERERS**  
T O T H E K I A O V A L



KIA OVAL  
EVENTS &  
ENTERTAINMENT

# BRINGING YOUR OWN CATERERS

If you would like to bring your own caterer we are able to offer “Dry Hire” of the rooms in the venue on weekends only.

This process is subject to restrictions on rooms and specific requirements from yourselves and your caterer.

There are several rooms at the Kia Oval which can be used by external caterers (for a maximum of 12 hours between the hours of 07:00 - 23:30):

- Corinthian Roof Terrace (no kitchen – end time 19:00)
- Long Room
- India Room
- Ashes Suite
- England suite
- Jardine Suite (kitchenette only)





# REQUIREMENTS

A refundable deposit of £2500 to cover damage will be taken 2 weeks prior to your wedding. This is fully refundable only once the duty manager has completed a full inspection of the venue at the end of the event and there is no mess or damage.

As a minimum, at least two weeks prior, the Kia Oval must have copies of all of the following documents for any caterers or 3rd party suppliers. Without these documents, the event cannot take place:

- Public Liability Insurance for a minimum of £5,000,000;
- Food Safety training certificates: all food handling personnel must have basic food hygiene as a minimum;
- Personal Licences enabling the service/selling of alcohol;
- Company registration documents;
- HACCP or food safety management system;
- List of equipment they will be using;
- Chemical inventory (if using own chemicals);
- COSHH folder (if using own chemicals).



KIA OVAL  
EVENTS &  
ENTERTAINMENT

# INCLUSIONS & EXCLUSIONS

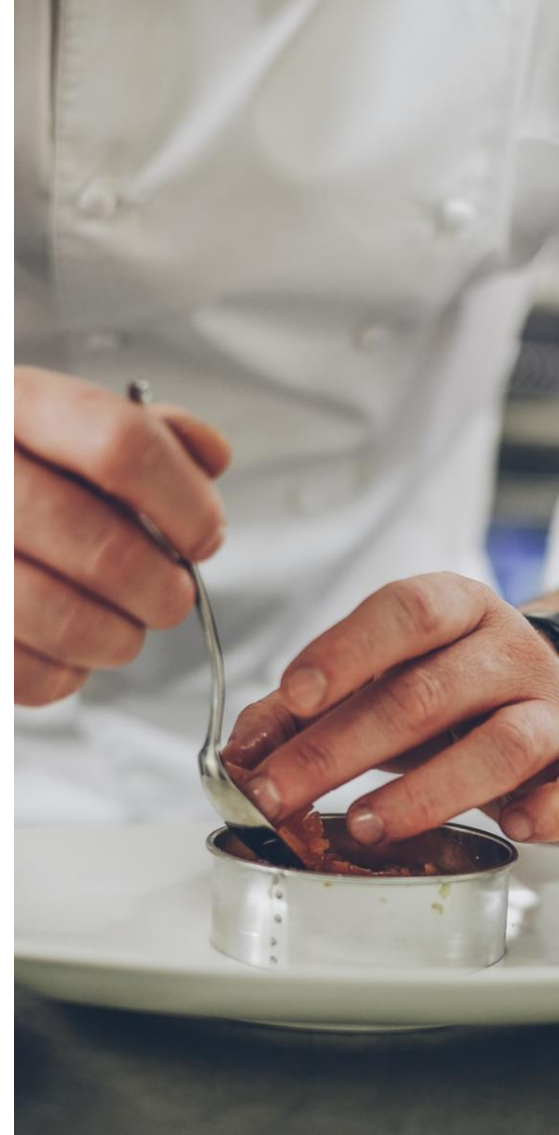
## Inclusions:

- tables and chairs (room will not be set-up);
- use of the preparation kitchens associated with the room hired (if available);
- a cleaner to maintain the public areas of the building, including the toilets;
- A duty manager will be on site to be a point of contact throughout the event, however the duty manager will not be involved in servicing the event in any way;
- Bins to dispose of your rubbish;
- Cleaning chemicals for the kitchen areas only, subject to signature of the appropriate paperwork.

## Exclusions:

In addition to the hire of the room security will be charged based on your final numbers. Additional items are purchasable, and these are:

- Table linen, napkins, cutlery, crockery, and glassware;
- Staff and cleaners;
- Cleaner's to maintain the room;
- Use of the bar area or our bar with staff to operate.





# ENGLAND SUITE

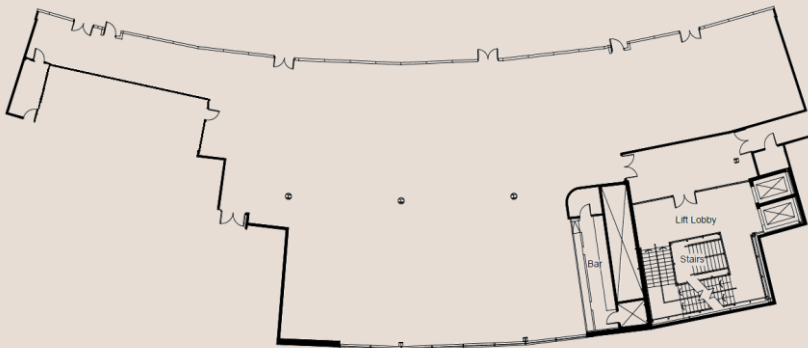


**KIA OVAL**  
EVENTS &  
ENTERTAINMENT

The England Suite, is the largest purpose-built conference room in the 1845 Stand. Capable of accommodating up to 650 guests theatre style, or 510 for a dinner, this second floor suite is one of the most versatile spaces at the Kia Oval. Doors lead directly onto the Club-Level balcony overlooking the pitch, and a wall of windows ensures natural daylight floods the room.

SET-UP TYPE	QUANTITY
Theatre	650
Cabaret	400
Dining	510
Reception	700
U-Shape	Bespoke
Classroom	Bespoke

DIMENSIONS	
Length	29
Width	20
Height	2.5
Sqm2	606



# ASHES SUITE

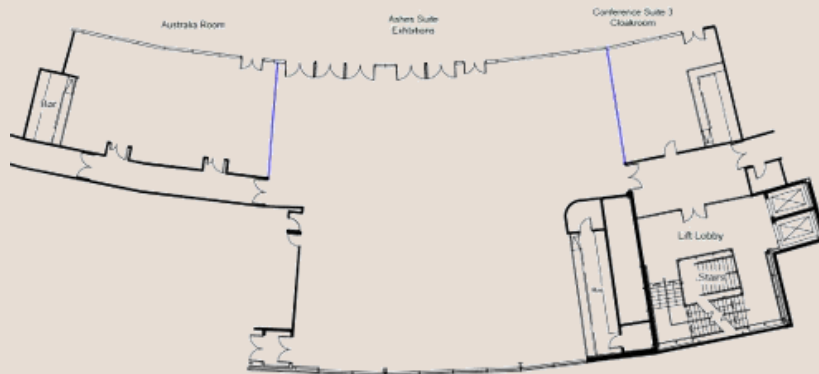


**KIA OVAL**  
EVENTS &  
ENTERTAINMENT

The Ashes Suite, named after the famous and ancient Cricket series between England and Australia, is located on the first floor. The space can accommodate 500 guests informally, up to 300 dining or 340 theatre style. With a wall of windows overlooking the pitch, the room features an abundance of natural daylight and has complimentary high-speed Wi-Fi for all your delegates.

SET-UP TYPE	QUANTITY
Theatre	350
Cabaret	280
Dining	420
Reception	500
U-Shape	bespoke
Classroom	bespoke

DIMENSIONS	
Length	23
Width	20
Height	2.7
Sqm2	482

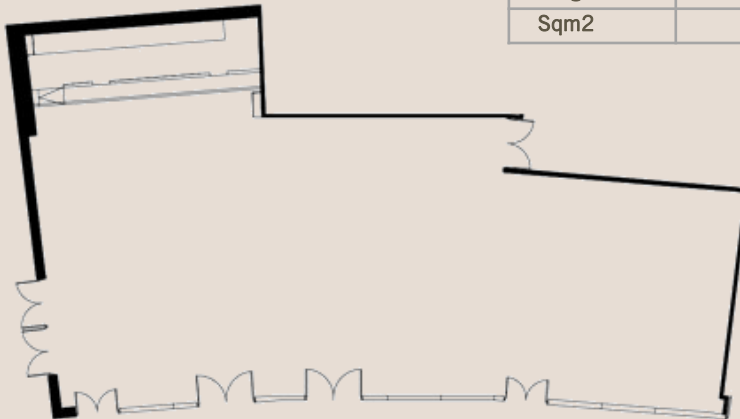


# INDIA ROOM



**KIA OVAL**  
EVENTS &  
ENTERTAINMENT

The India Suite is located on the second floor of the 1845 Stand. There is a large private covered terrace with a bar, which makes the room perfect for summer conferences with an al fresco lunch or perhaps a post-conference Pimms whilst watching the cricket? There is complimentary Wi-Fi for all delegates inside the suite.



SET-UP TYPE	QUANTITY
Theatre	170
Cabaret	140
Dining	160
Reception	200
U-Shape	78
Classroom	55

DIMENSIONS	
Length	23
Width	9
Height	2.3
Sqm2	234



# JARDINE SUITE



**KIA OVAL**  
EVENTS &  
ENTERTAINMENT

The Jardine Suite is the Kia Oval's ultimate "blank canvas" room. Situated on the ground floor of the 1845 stand, the room features a large central area flanked by two large wings, and is perfect for exhibitions of up to 50 shell scheme stands. The Capacities to the right are for the central section only.

SET-UP TYPE	QUANTITY
Theatre	450
Cabaret	330
Dining	450
Reception	500
U-Shape	Bespoke
Classroom	Bespoke

DIMENSIONS	
Length	126
Width	24
Height	4.5
Sqm2	1549





# CORINTHIAN ROOF TERRACE

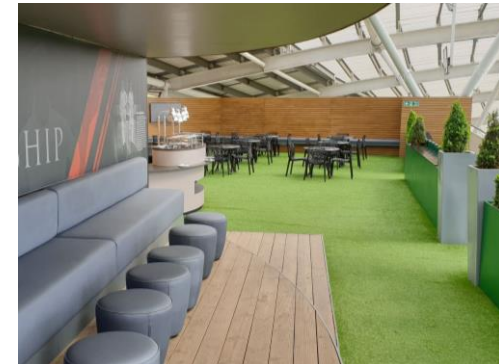
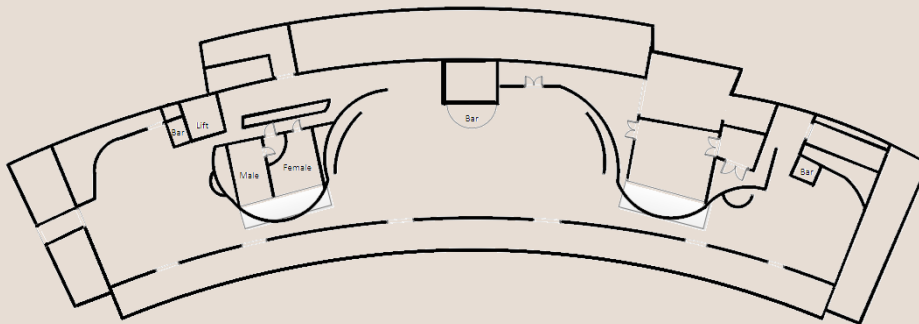


**KIA OVAL**  
EVENTS &  
ENTERTAINMENT

The Corinthian Roof Terrace is the Kia Oval's "hidden gem". Sitting right at the top of the 1845 Stand, this covered area can hold up to an impressive 600 guests on an informal basis. There are spectacular views of the pitch on one side and the impressive London skyline on the other side. There are food service stations, bars and even a DJ booth on the Corinthian Roof Terrace, making the area perfect for summer parties or post-conference drinks.

SET-UP TYPE	QUANTITY
Reception	600

DIMENSIONS	
Length	77
Width	15
Sqm2	569



# LONG ROOM

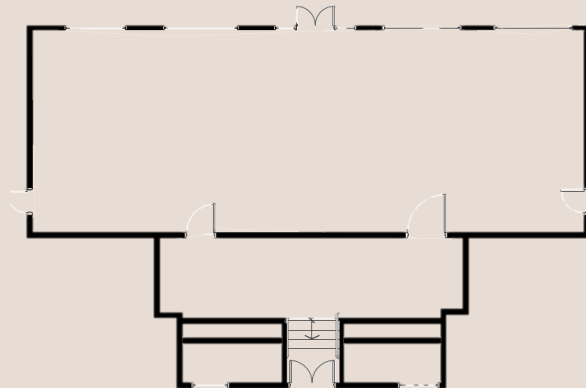


**KIA OVAL**  
EVENTS &  
ENTERTAINMENT

The Long Room is the most historic room within the Members Pavilion. Built in 1898, the room is steeped in history, with portraits of the Surrey greats adorning the walls. The huge windows and high ceiling allow for plenty of natural daylight and the doors lead out directly to the side of the pitch, so your guests can take their coffee breaks and lunches whilst taking in spectacular pitch side views.

SET-UP TYPE	QUANTITY
Theatre	100
Cabaret	80
Dining	80
Reception	120
U-Shape	46
Classroom	Bespoke

DIMENSIONS	
Length	18
Width	7
Height	6.5
Sqm2	135



# ACCESS



KIA OVAL  
EVENTS &  
ENTERTAINMENT

## Changing Places Facility:

- For those who need extra equipment and space to allow them to use the toilets safely and comfortably we have a Changing Places facility located on the 1st floor of the 1845 stand.

## Those with Ambulant disabilities:

- Conference parking for Blue badge holders is available, please contact your sale person to book this in.
- Accessible toilet facilities are available throughout the ground with the majority requiring a RADAR key. If you are not in possession of such a key then contact the nearest reception who will source one for you immediately.
- Emergency cords are situated in all accessible toilets.

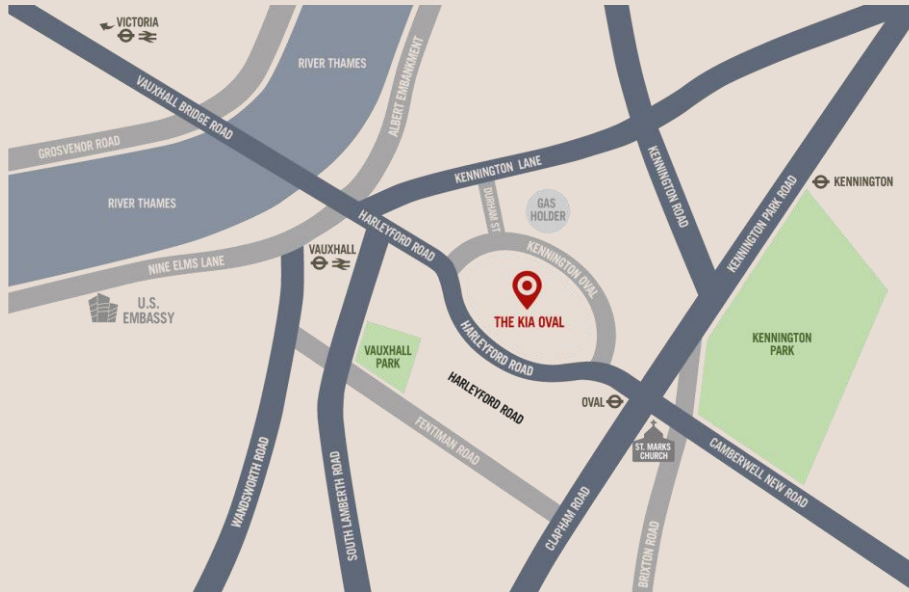
## Additional Information:

- 95% of all internal areas are wheelchair friendly
- Should you have any queries regarding access then please contact our Accessibility Liaison Officer, Theresa Peters, on [tpeters@surreycricket.com](mailto:tpeters@surreycricket.com) for further information.



# LOCATION

- Complimentary parking for organisers
- Outside the congestion Charge Zone
- On London's Super Cycle Highway
- Walking Distance from 4 underground stations
- Close to the Over ground station
- 10 minutes from Bank Underground







# TESTIMONIALS

*"We have used The Kia Oval for various events and have always been very happy with the service we have received. I cannot single out one event as all have been handled with the utmost professionalism and 'can do' approach. From the start of the booking process to the end of the event, The Kia Oval team are always courteous, accommodating and willing to make it work for the client. The roof top area is a great addition to the event space and we've been lucky enough to have used it twice and our Partners enjoyed the experience of being able to overlook the grounds with a drink in hand! If we have a large event, The Kia Oval is always our first thought as its 'TNT.....Tried n' Trusted'!"*

PA to Customer Director, JOHN LEWIS

---

*"Everyone commented and said it was the best managers meeting by far....they loved the food."*

EA to Senior Vice President, ADECCO



@KiaOvalEvents

0207 820 5670

[enquiries@kiaoval.com](mailto:enquiries@kiaoval.com)



**KIA OVAL**  
EVENTS &  
ENTERTAINMENT