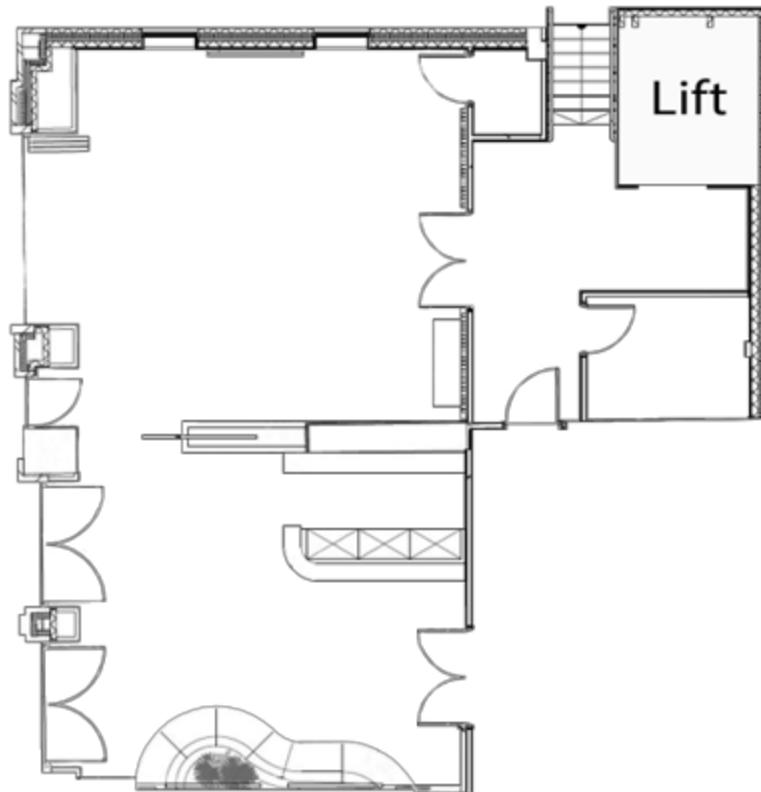


GRAHAM THORPE ROOM

The Graham Thorpe Room is located on the fourth floor of the pavilion. This room splits into two sub sections. One is a casual seating perfect for a lounge or green room and the other is ideal for a board meeting. The room has a stunning balcony overlooking the pitch.



SET-UP TYPE	QUANTITY
Theatre	40
Cabaret	30
Dining	30
Reception	80
U-Shape	16

DIMENSIONS	
Length	6
Width	12
Height	2.7
Sqm2	72



All measurements are completed in meters and are approximate.