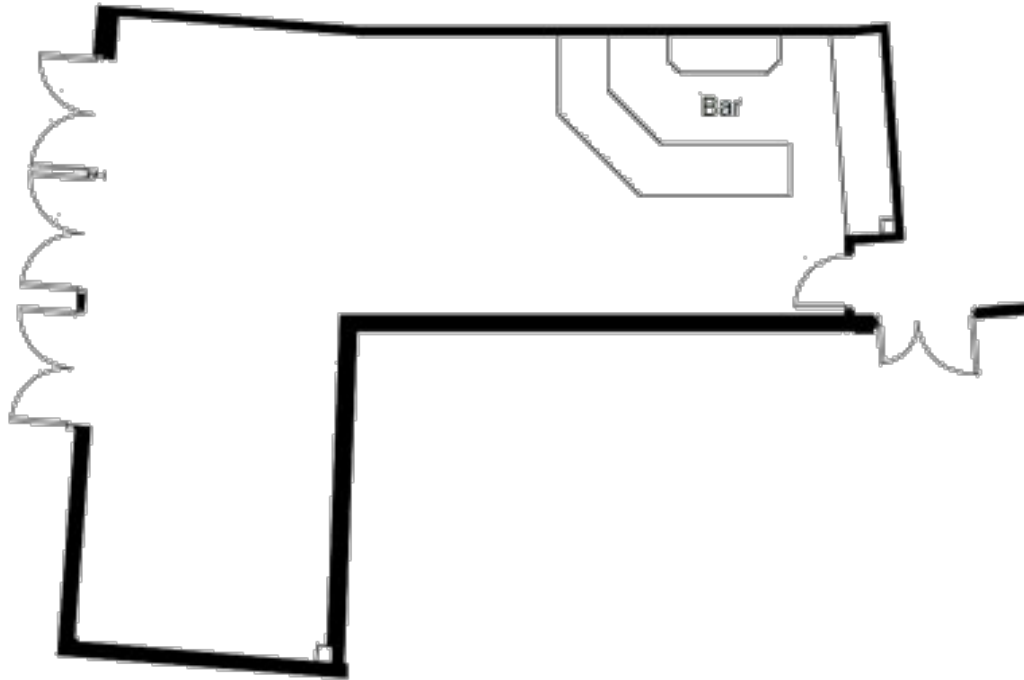


# LEGENDS LOUNGE

The Legends Lounge is located on the third floor of the JM Finn stand, next to the TV studios and commentary boxes. Perfect for more intimate meetings or drinks receptions, the suite can hold up to 60 people informally. The private terrace outside the room features spectacular views of the Oval wicket to one side and the skyline of the City of London on the other side.



| SET-UP TYPE | QUANTITY |
|-------------|----------|
| Theatre     | 40       |
| Cabaret     | 40       |
| Dining      | 60       |
| Reception   | 60       |
| U-Shape     | 30       |
| Classroom   | 24       |

| DIMENSIONS |     |
|------------|-----|
| Length     | 10  |
| Width      | 3   |
| Height     | 2.6 |
| Sqm2       | 40  |



All measurements are completed in meters and are approximate.