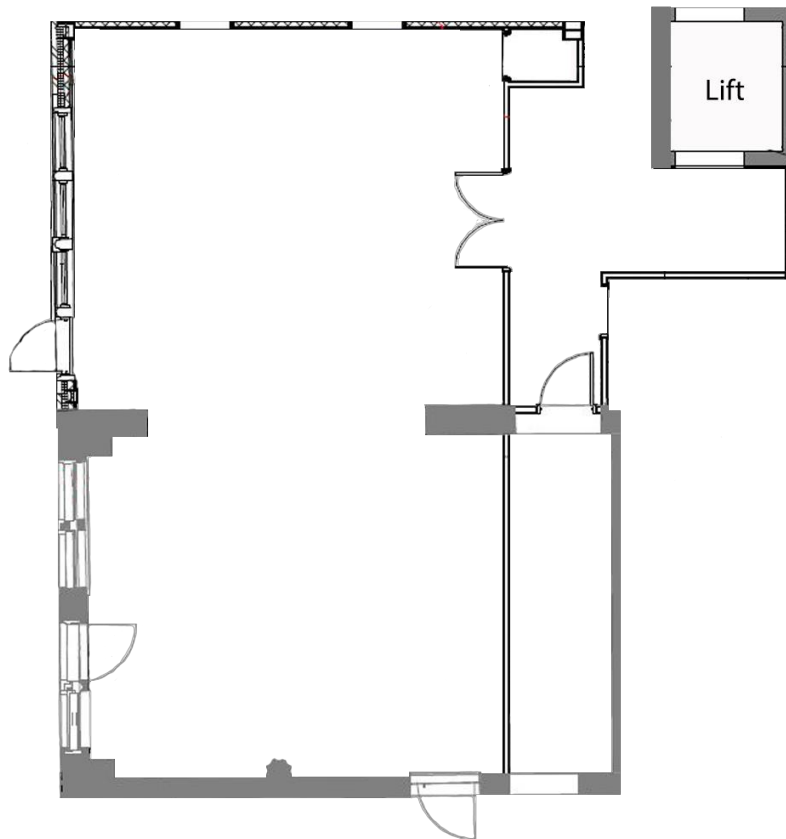


PRINCE OF WALES

The Prince of Wales Room is located on the second floor of the pavilion. This room can accommodate up to 60 in cabaret layout, 80 in theatre style and has a stunning balcony overlooking the pitch for a reception style event.



SET-UP TYPE	QUANTITY
Theatre	70
Cabaret	70
Dining	70
Reception	80
U-Shape	46
Classroom	Bespoke

DIMENSIONS	
Length	6
Width	12
Height	2.7
Sqm2	72



All measurements are completed in meters and are approximate.